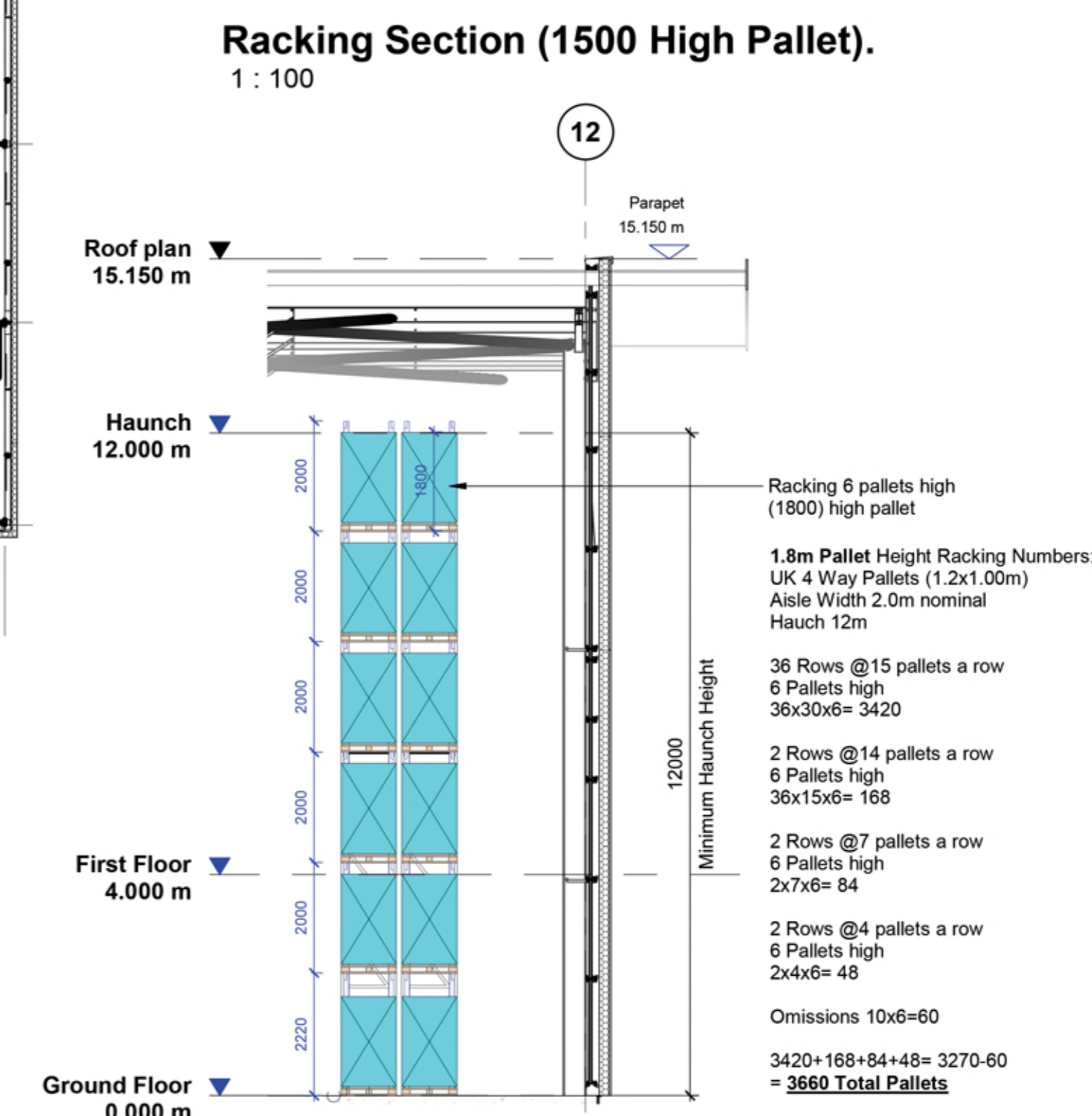
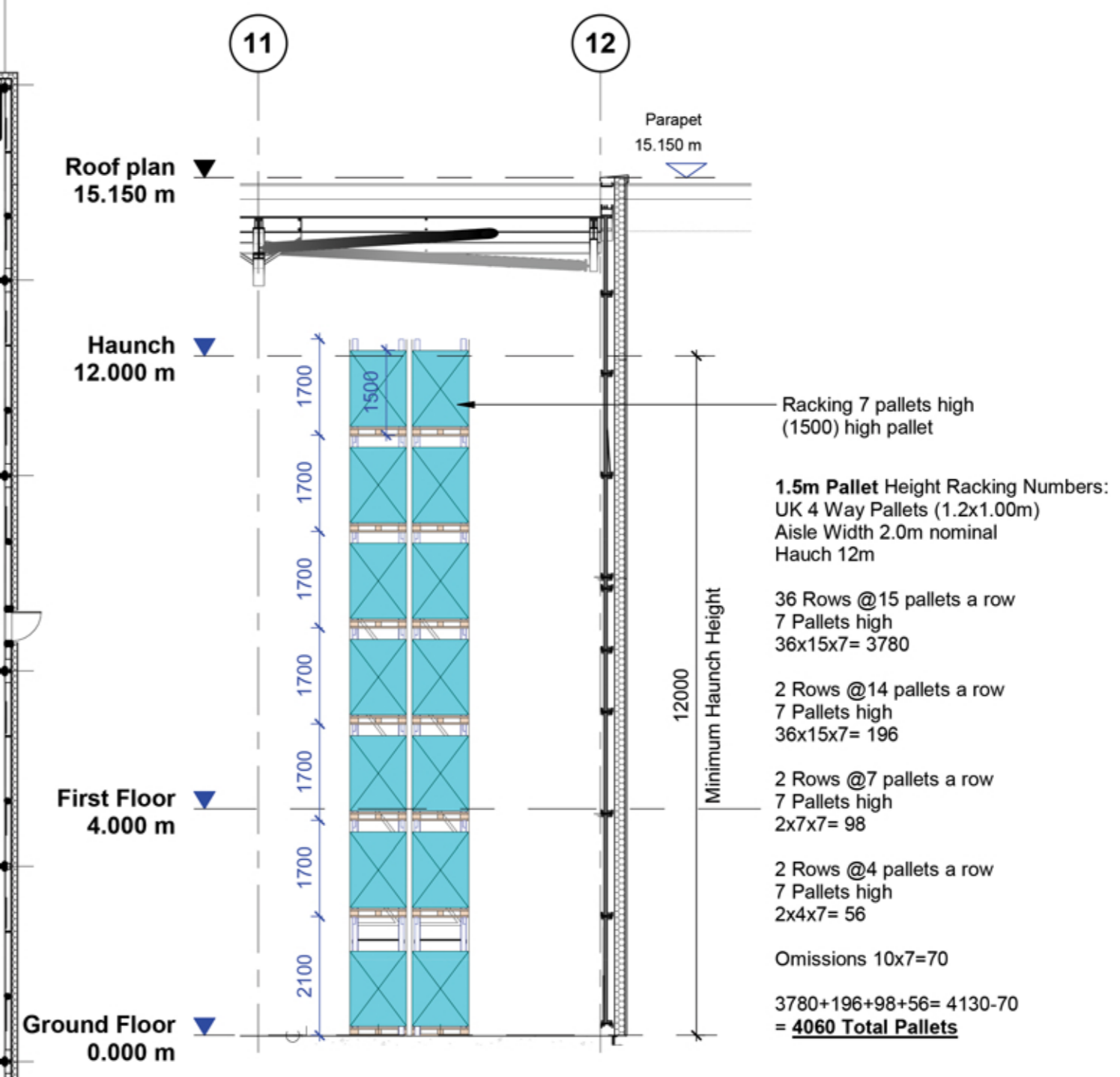


Notes:-
 Racking layout may need adjustment to co-ordinate with joints in floor slab. Open bays at floor level may be needed subject to review of escape distances by local Authority Building Control



Unit 4 - Racking Plan Layout - Narrow Bay
 1 : 200



P01 First Issue NB IN 16.12.24
 rev amendments by ckd date

Access at Eastern Gateway,
 Ipswich

Unit 4 - Racking Layout - Narrow Bay

Information Container LOD: **LOD 300**

