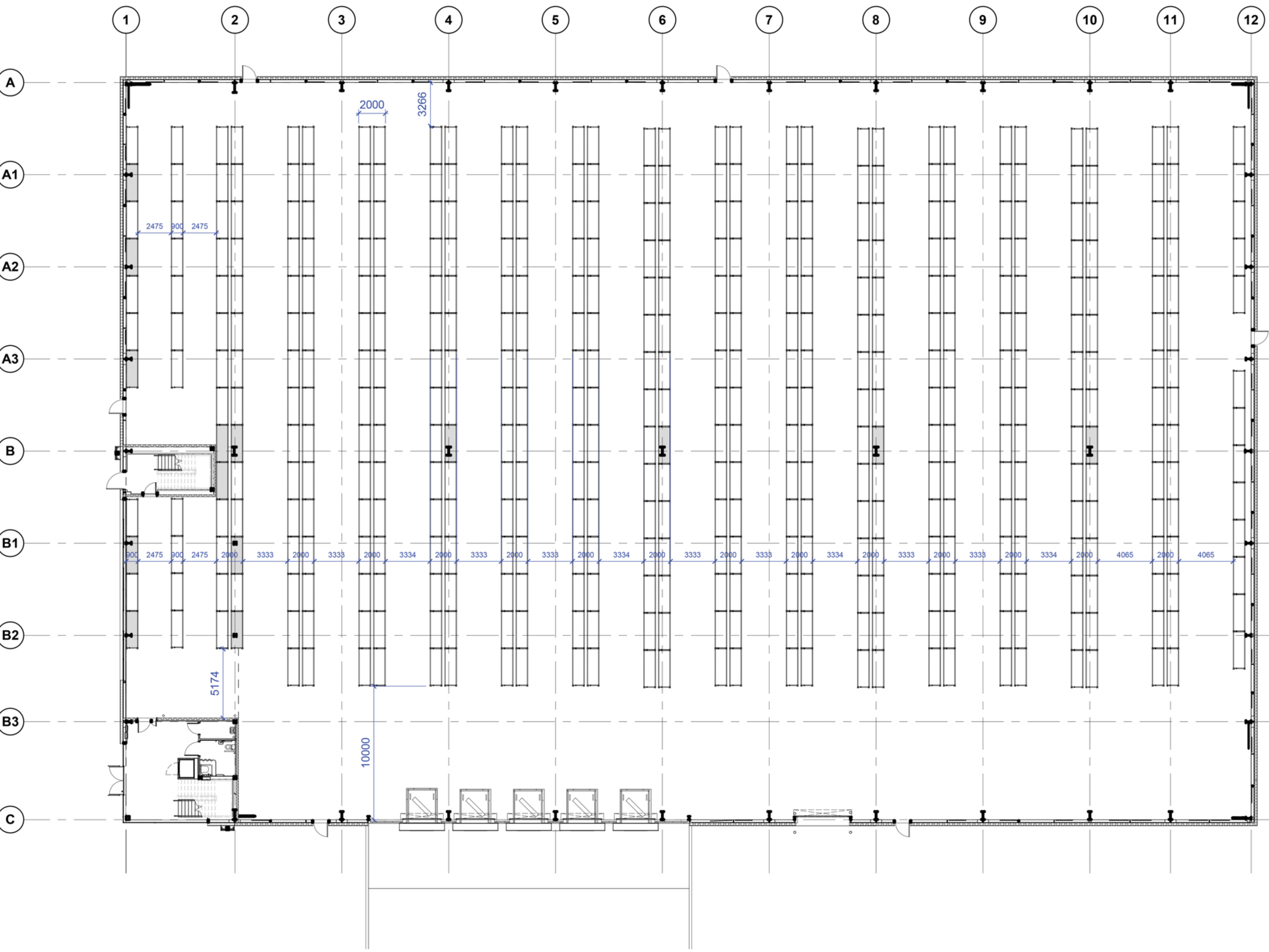
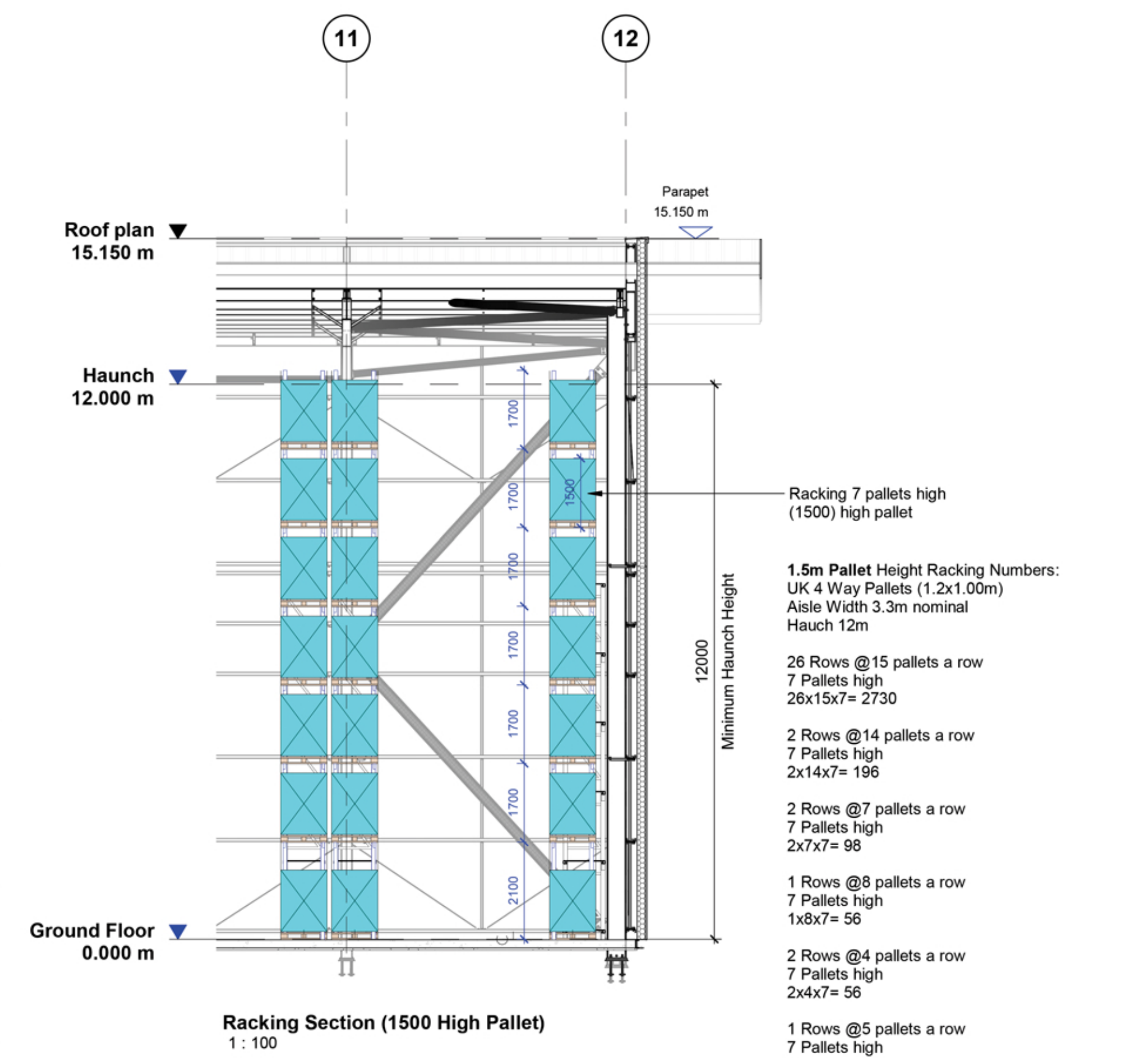


Notes:-  
 Racking layout may need adjustment to co-ordinate with joints in floor slab. Open bays at floor level may be needed subject to review of escape distances by local Authority Building Control



Unit 4 - Racking Plan Layout - Wide Bay  
 1 : 200



Racking Section (1500 High Pallet)  
 1 : 100

Racking 7 pallets high  
 (1500) high pallet

**1.5m Pallet Height Racking Numbers:**  
 UK 4 Way Pallets (1.2x1.00m)  
 Aisle Width 3.3m nominal  
 Hauch 12m

26 Rows @15 pallets a row  
 7 Pallets high  
 $26 \times 15 \times 7 = 2730$

2 Rows @14 pallets a row  
 7 Pallets high  
 $2 \times 14 \times 7 = 196$

2 Rows @7 pallets a row  
 7 Pallets high  
 $2 \times 7 \times 7 = 98$

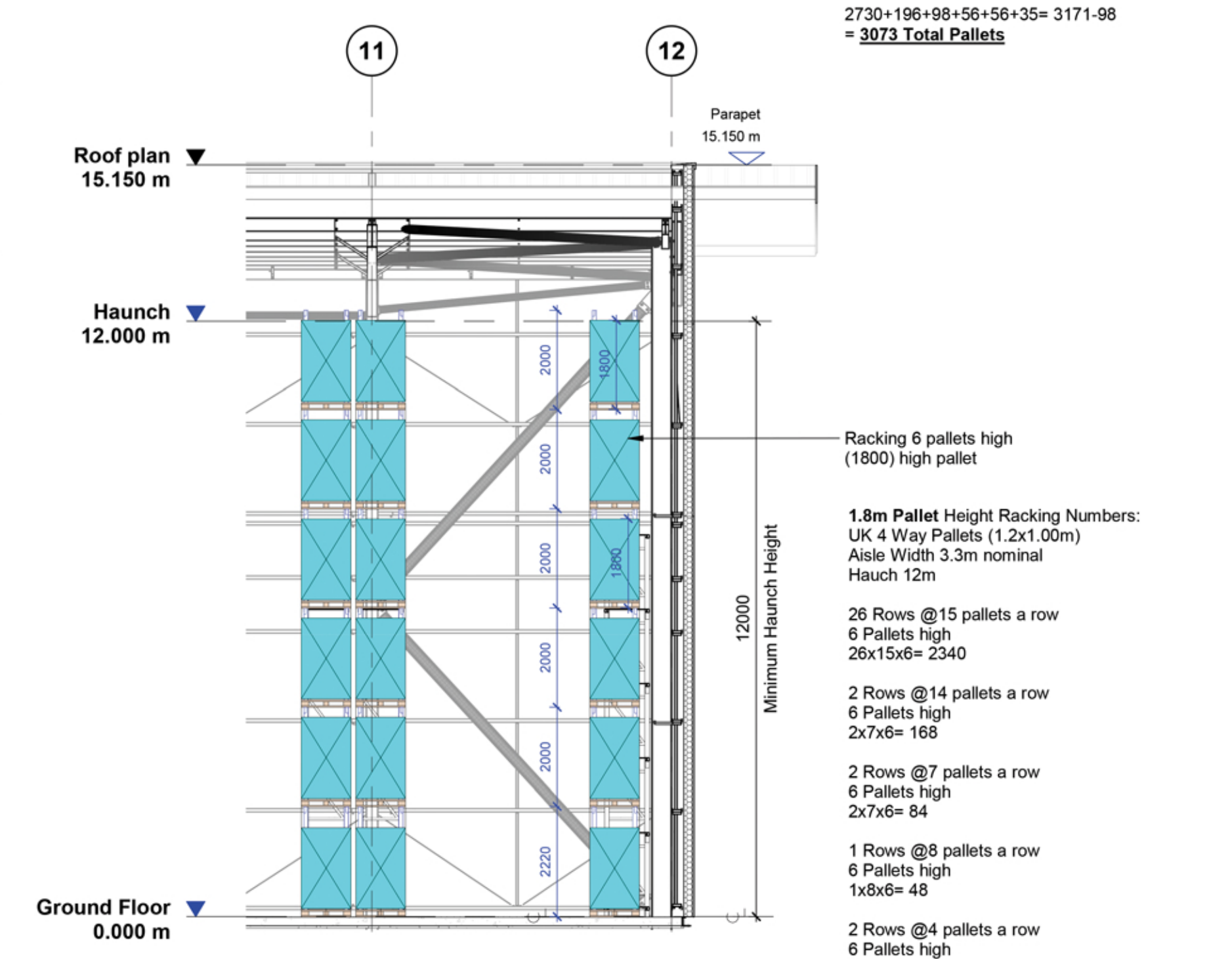
1 Rows @8 pallets a row  
 7 Pallets high  
 $1 \times 8 \times 7 = 56$

2 Rows @4 pallets a row  
 7 Pallets high  
 $2 \times 4 \times 7 = 56$

1 Rows @5 pallets a row  
 7 Pallets high  
 $1 \times 5 \times 7 = 35$

Omissions  $14 \times 7 = 98$

$2730 + 196 + 98 + 56 + 35 = 3171 - 98$   
**= 3073 Total Pallets**



Racking Section (1800 High Pallet)  
 1 : 100

Racking 6 pallets high  
 (1800) high pallet

**1.8m Pallet Height Racking Numbers:**  
 UK 4 Way Pallets (1.2x1.00m)  
 Aisle Width 3.3m nominal  
 Hauch 12m

26 Rows @15 pallets a row  
 6 Pallets high  
 $26 \times 15 \times 6 = 2340$

2 Rows @14 pallets a row  
 6 Pallets high  
 $2 \times 7 \times 6 = 168$

2 Rows @7 pallets a row  
 6 Pallets high  
 $2 \times 7 \times 6 = 84$

1 Rows @8 pallets a row  
 6 Pallets high  
 $1 \times 8 \times 6 = 48$

2 Rows @4 pallets a row  
 6 Pallets high  
 $2 \times 4 \times 6 = 48$

1 Rows @5 pallets a row  
 6 Pallets high  
 $1 \times 5 \times 6 = 30$

Omissions  $14 \times 6 = 84$

$2340 + 168 + 84 + 48 + 30 = 2718 - 84$   
**= 2634 Total Pallets**

P01	First Issue	NB	IN	16.12.24
rev	amendments	by	ckd	date

## Access at Eastern Gateway, Ipswich

Unit 4 - Racking Layout - Wide Bay

Information Container LOD: **LOD 300**



RIBA PoW Stage:	Stage 6: Handover
Suitability / Status:	S0
Drawn / Checked:	NB / IN
Date:	16.12.2024
Scale:	As indicated @ A1
UMC Project Number:	20093
Document Reference:	20093 -UMC -A-
Drawing no:	SK0180
Revision:	P01

